

HESTER COURT FLOOR PLANS

ROOM KEY

HAWTHORNE - FLATS 1, 12, 20, 27, 37, 45, 53, 61, 69

KELSEY - FLATS 13, 21, 32, 42, 50, 58, 66, 74

RICHMOND - FLATS 14, 22, 25, 35, 43, 51, 59, 67

GADEBRIDGE - FLATS 4, 11, 15, 19, 23, 26, 30, 36, 40, 44, 48, 52, 56, 60, 64, 68, 72

MAYESBROOK - FLATS 5, 8, 16, 31, 33, 41, 49, 57, 65, 73

CHERRY - FLAT 6 (WC)

HIGHBURY - FLAT 2

HOLLAND - FLAT 3

VICTORIA - FLAT 7

DENHAM - FLATS 9, 17

STONELEY - FLATS 10, 18

HANSTEAD - FLAT 24 (WC)

MAGWICK - FLAT 28 (WC)

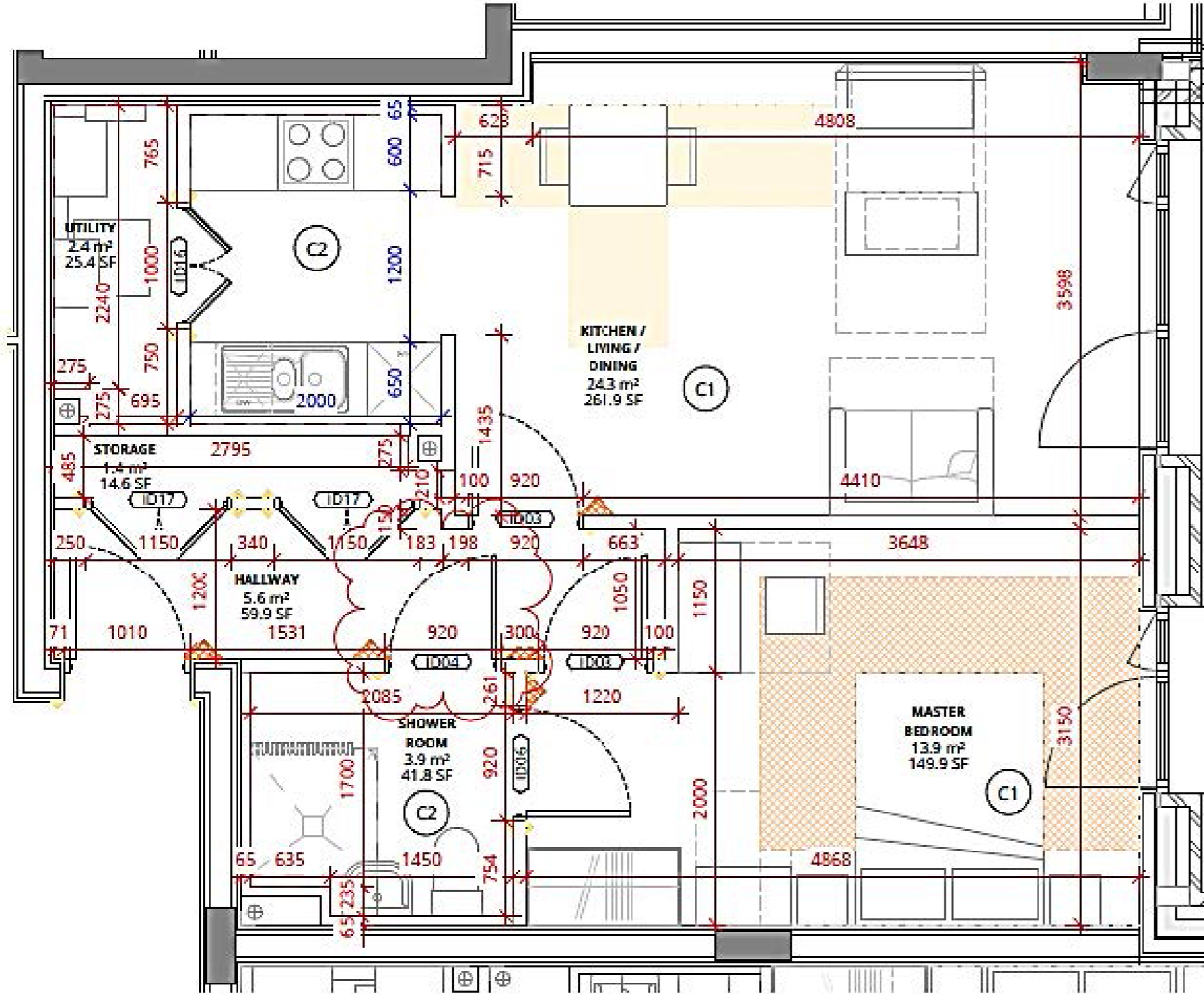
WILLOW - FLATS 29 (WC), 34, 39 (WC), 47 (WC), 55 (WC), 63 (WC), 71 (WC)

BLETCHLEY - FLATS 38, 46, 54, 62, 70

SUNBURY - FLAT 75

HAWTHORNE - 1 BED, 2 PERSON

FLATS 1, 12, 20, 27, 37, 45, 53, 61, 69

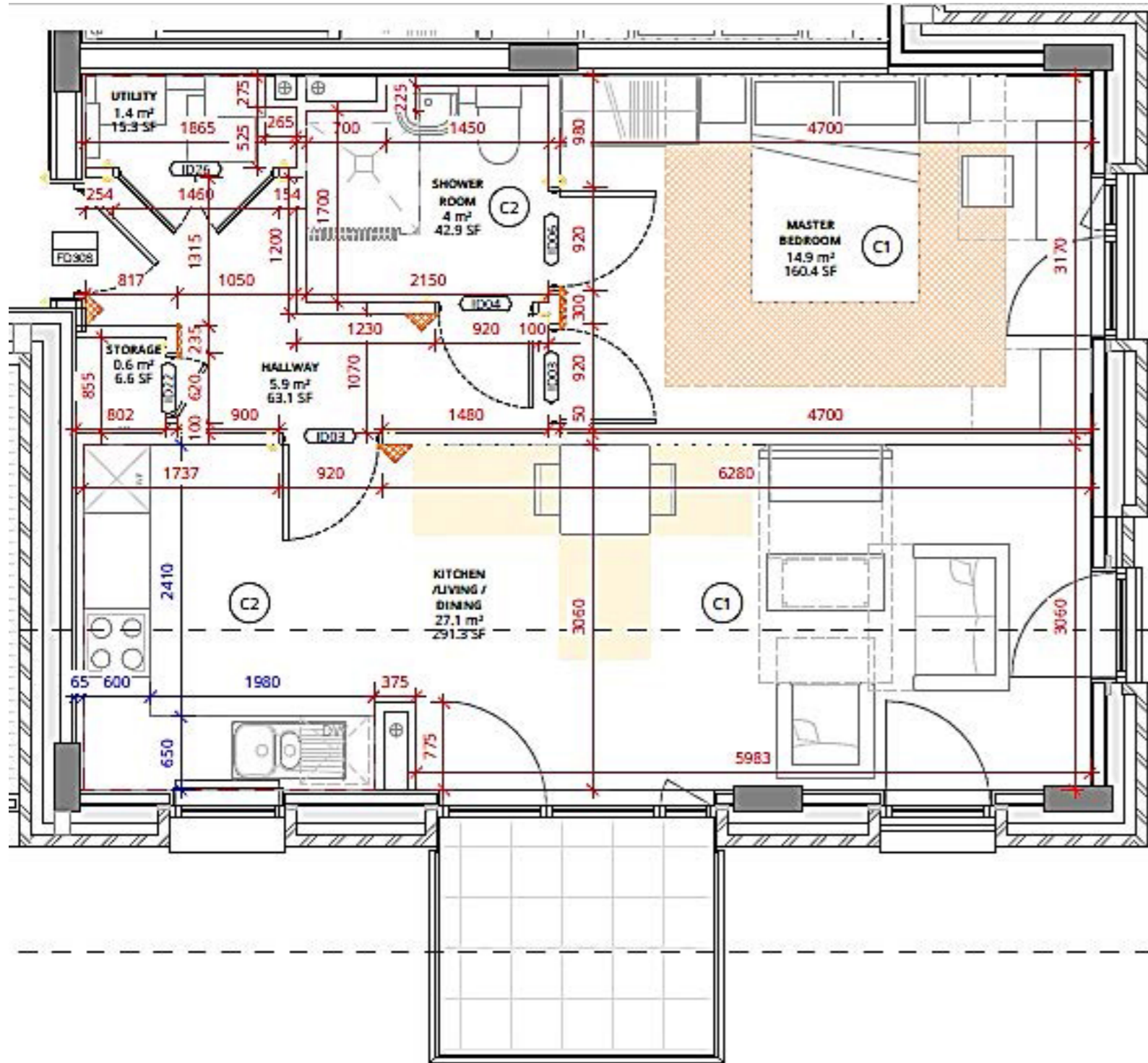


Whilst every attempt has been made to ensure the accuracy of the floorplan contained here, measurements of doors, windows, rooms and any other items are approximate and no responsibility is taken for error, omission, or mis-statement. This plan is for illustrative purposes only and should be used as such by any prospective resident. The services, systems and appliances shown have not been tested and no guarantee as their operability or efficiency can be given.

REF: BLOCK A1 - UNIT AZ_1_01

KELSEY - 1 BED, 2 PERSON

FLATS 13, 21, 32, 42, 50, 58, 66, 74

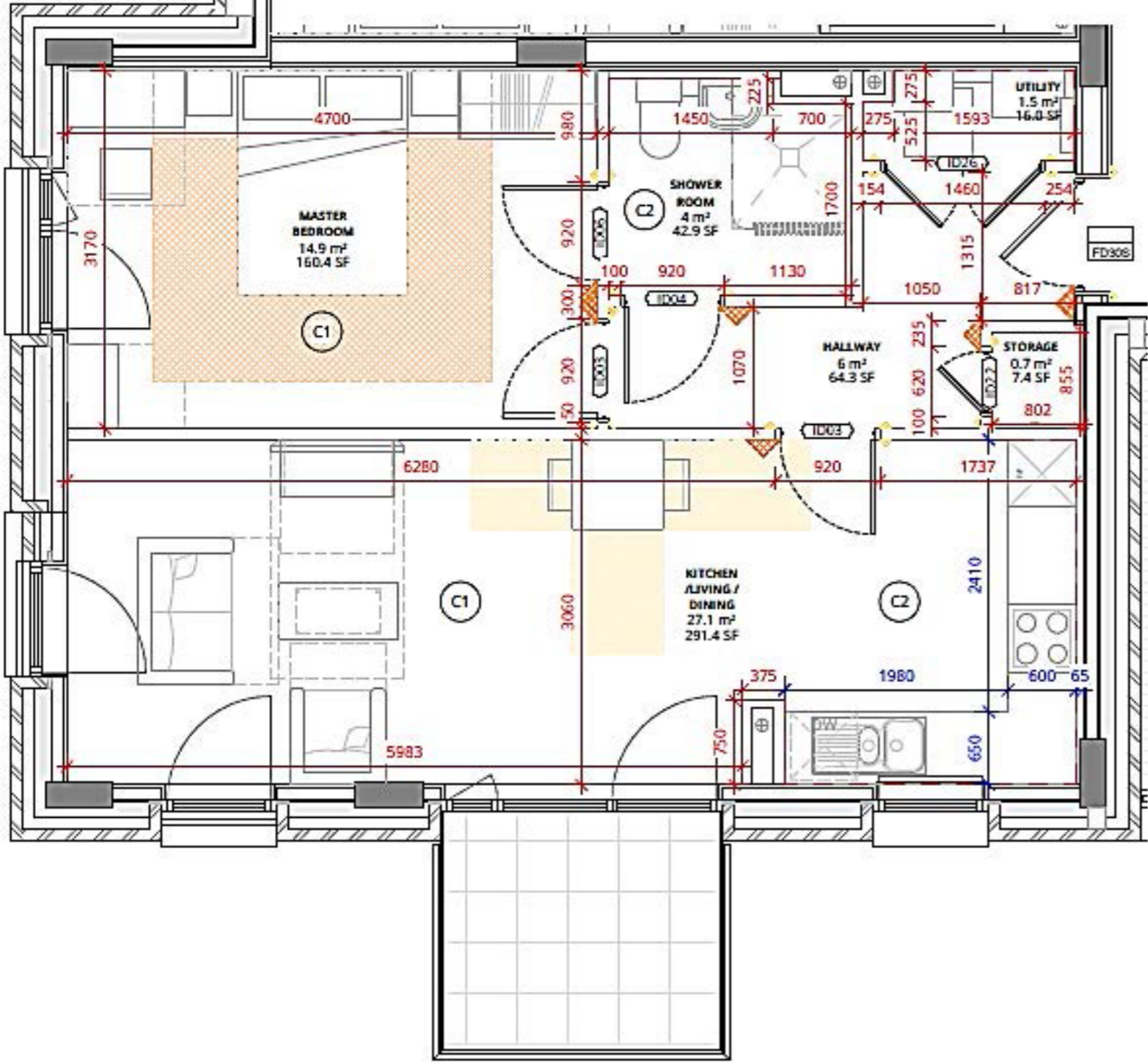


Whilst every attempt has been made to ensure the accuracy of the floorplan contained here, measurements of doors, windows, rooms and any other items are approximate and no responsibility is taken for error, omission, or mis-statement. This plan is for illustrative purposes only and should be used as such by any prospective resident. The services, systems and appliances shown have not been tested and no guarantee as their operability or efficiency can be given.

REF: BLOCK A1 & A2 - UNIT AZ_1_02

RICHMOND - 1 BED, 2 PERSON

FLATS 14, 22, 25, 35, 43, 51, 59, 67

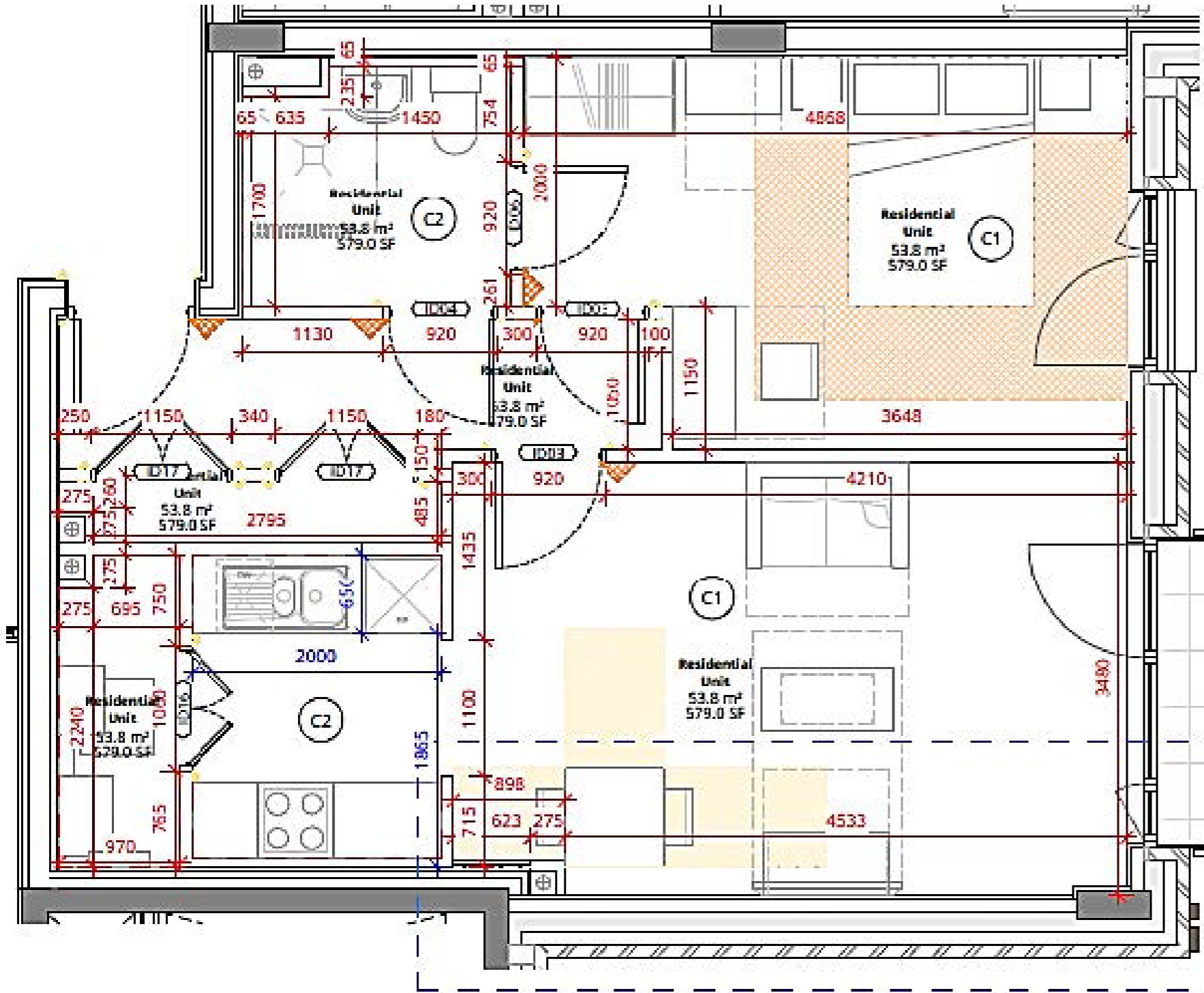


Whilst every attempt has been made to ensure the accuracy of the floorplan contained here, measurements of doors, windows, rooms and any other items are approximate and no responsibility is taken for error, omission, or mis-statement. This plan is for illustrative purposes only and should be used as such by any prospective resident. The services, systems and appliances shown have not been tested and no guarantee as their operability or efficiency can be given.

REF: BLOCK A1 & A2 - UNIT AZ_1_03

GADDEBRIDGE - 1 BED, 2 PERSON

FLATS 4, 11, 15, 19, 23, 26, 30, 36,
40, 44, 48, 52, 56, 60, 64, 68, 72

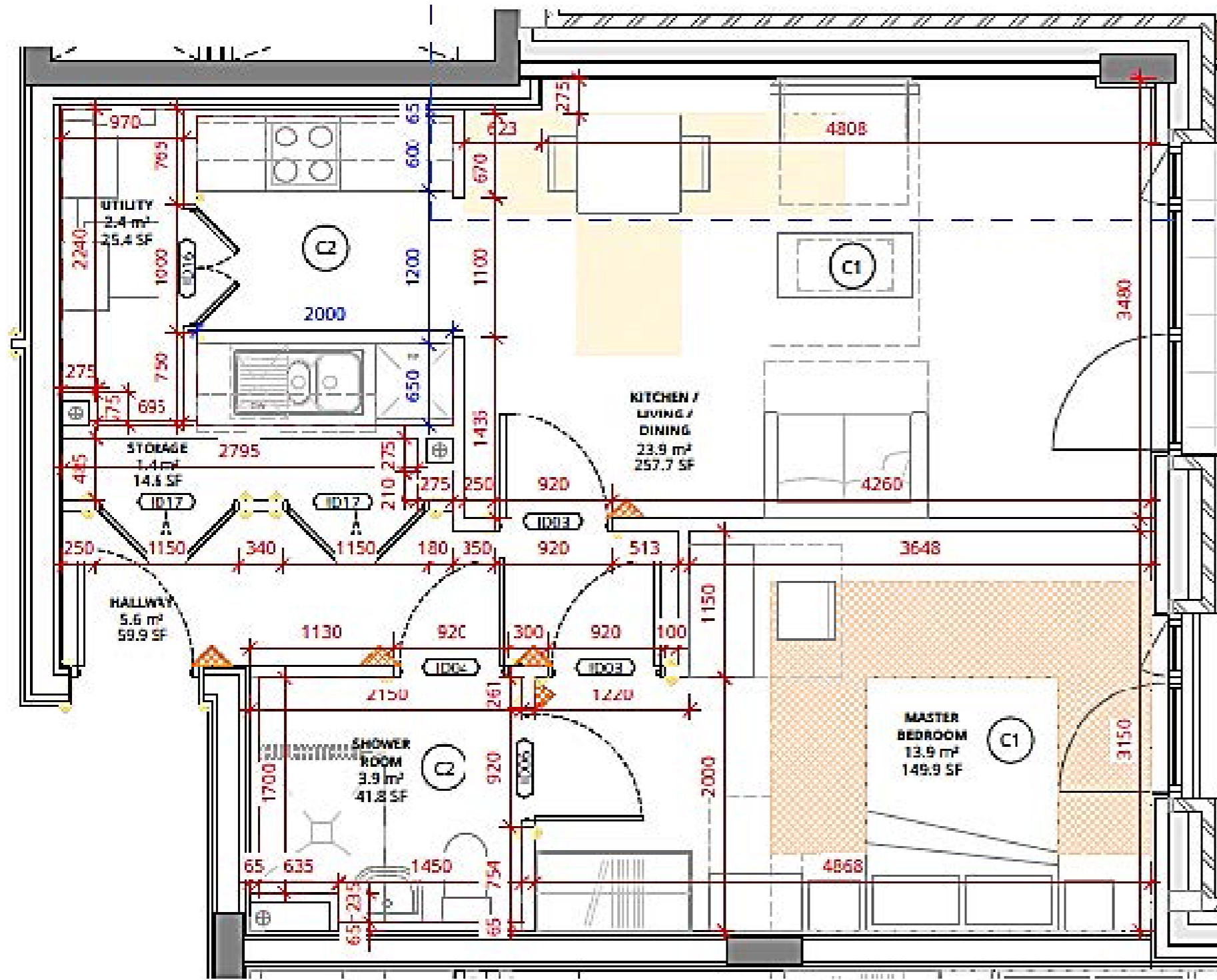


Whilst every attempt has been made to ensure the accuracy of the floorplan contained here, measurements of doors, windows, rooms and any other items are approximate and no responsibility is taken for error, omission, or mis-statement. This plan is for illustrative purposes only and should be used as such by any prospective resident. The services, systems and appliances shown have not been tested and no guarantee as their operability or efficiency can be given.

REF: BLOCK A1 & A2 - UNIT AZ_1_04

MAYBESBROOK - 1 BED, 2 PERSON

FLATS 5, 8, 16, 31, 33, 41, 49, 57, 65, 73

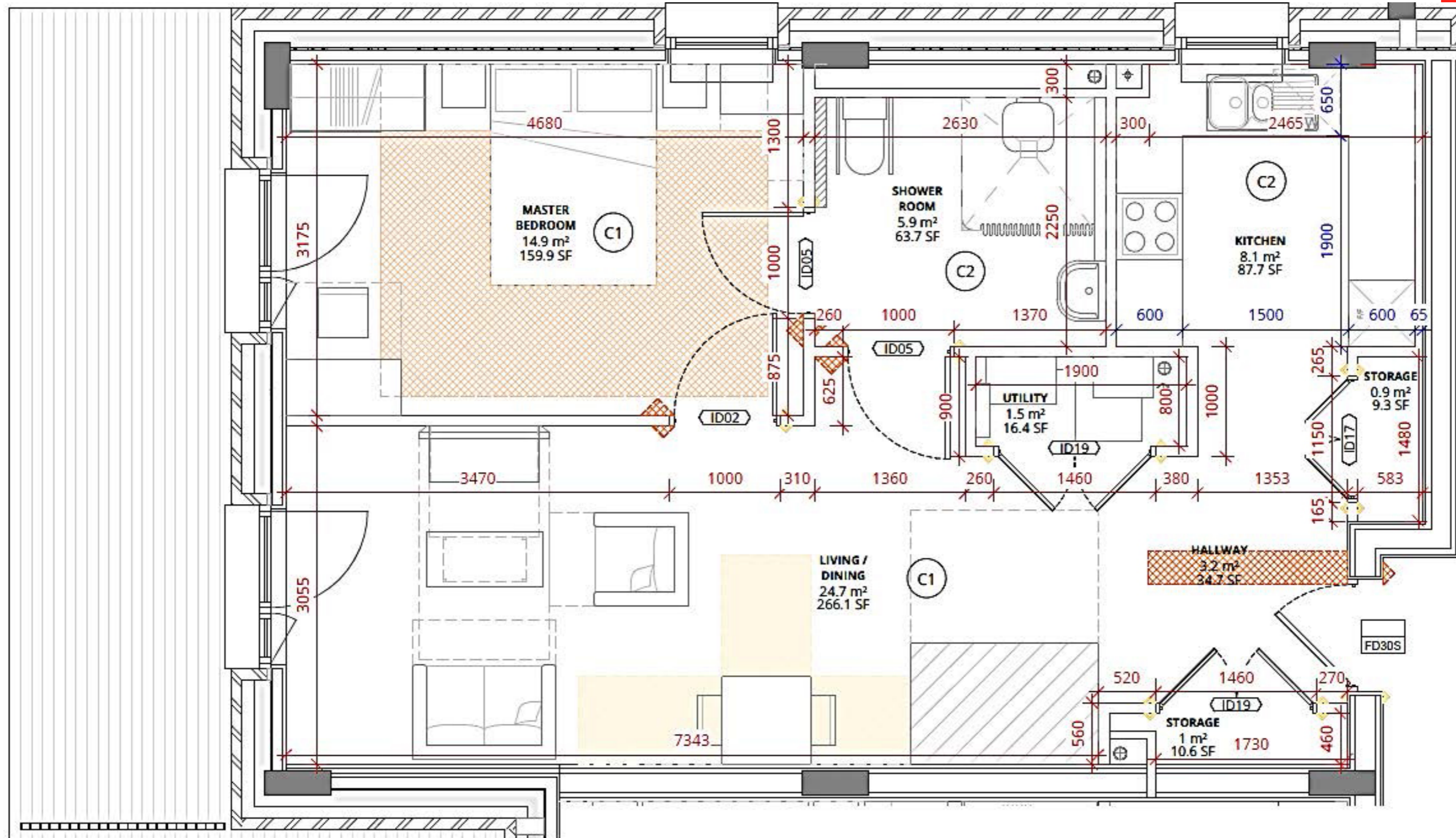


Whilst every attempt has been made to ensure the accuracy of the floorplan contained here, measurements of doors, windows, rooms and any other items are approximate and no responsibility is taken for error, omission, or mis-statement. This plan is for illustrative purposes only and should be used as such by any prospective resident. The services, systems and appliances shown have not been tested and no guarantee as their operability or efficiency can be given.

REF: BLOCK A1 & A2 - UNIT AZ_1_05

CHERRY - 1 BED, 2 PERSON

FLAT 6 (WC)

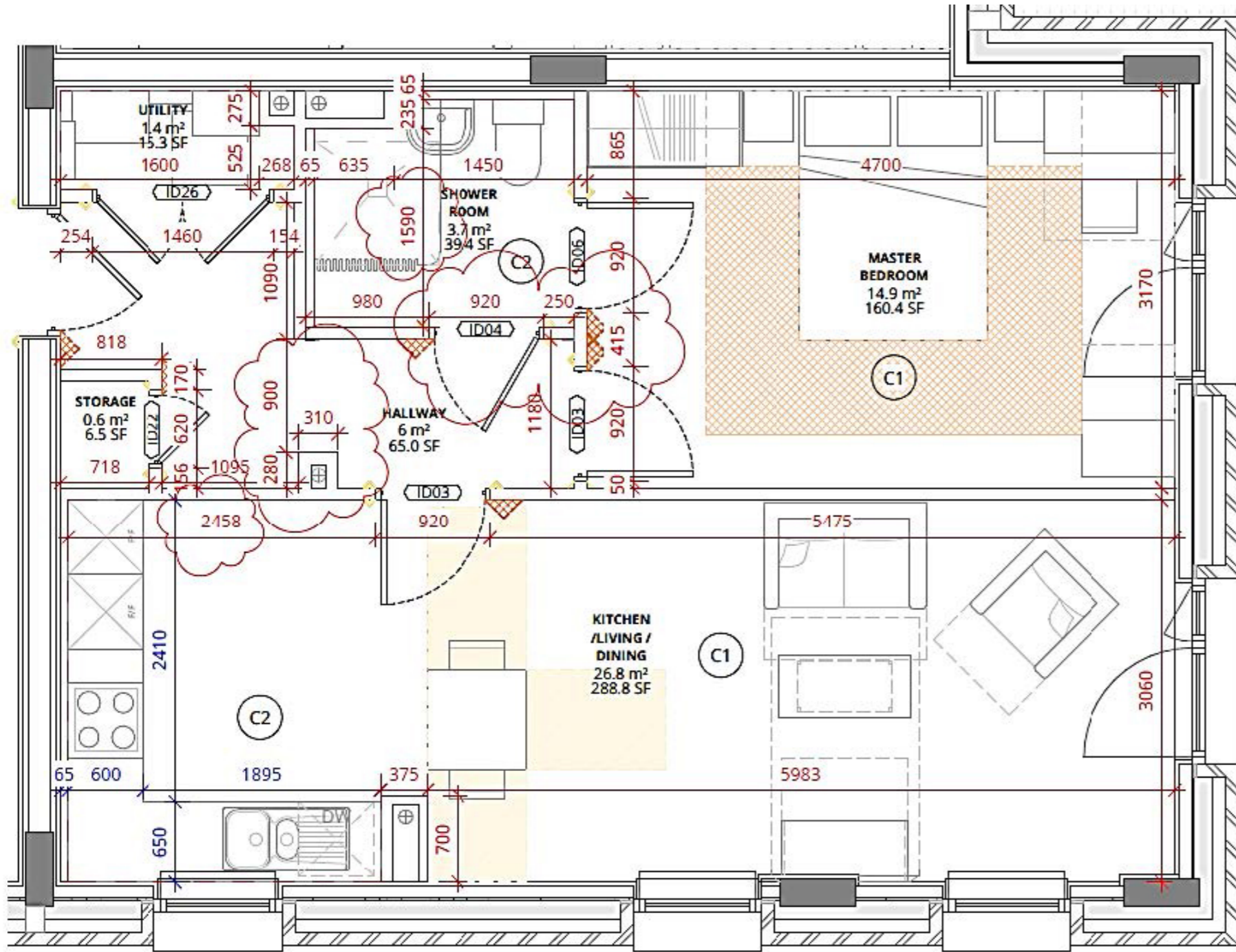


Whilst every attempt has been made to ensure the accuracy of the floorplan contained here, measurements of doors, windows, rooms and any other items are approximate and no responsibility is taken for error, omission, or mis-statement. This plan is for illustrative purposes only and should be used as such by any prospective resident. The services, systems and appliances shown have not been tested and no guarantee as their operability or efficiency can be given.

REF: BLOCK A1 - UNIT A1_1_01

HIGHBURY - 1 BED, 2 PERSON

FLAT 2

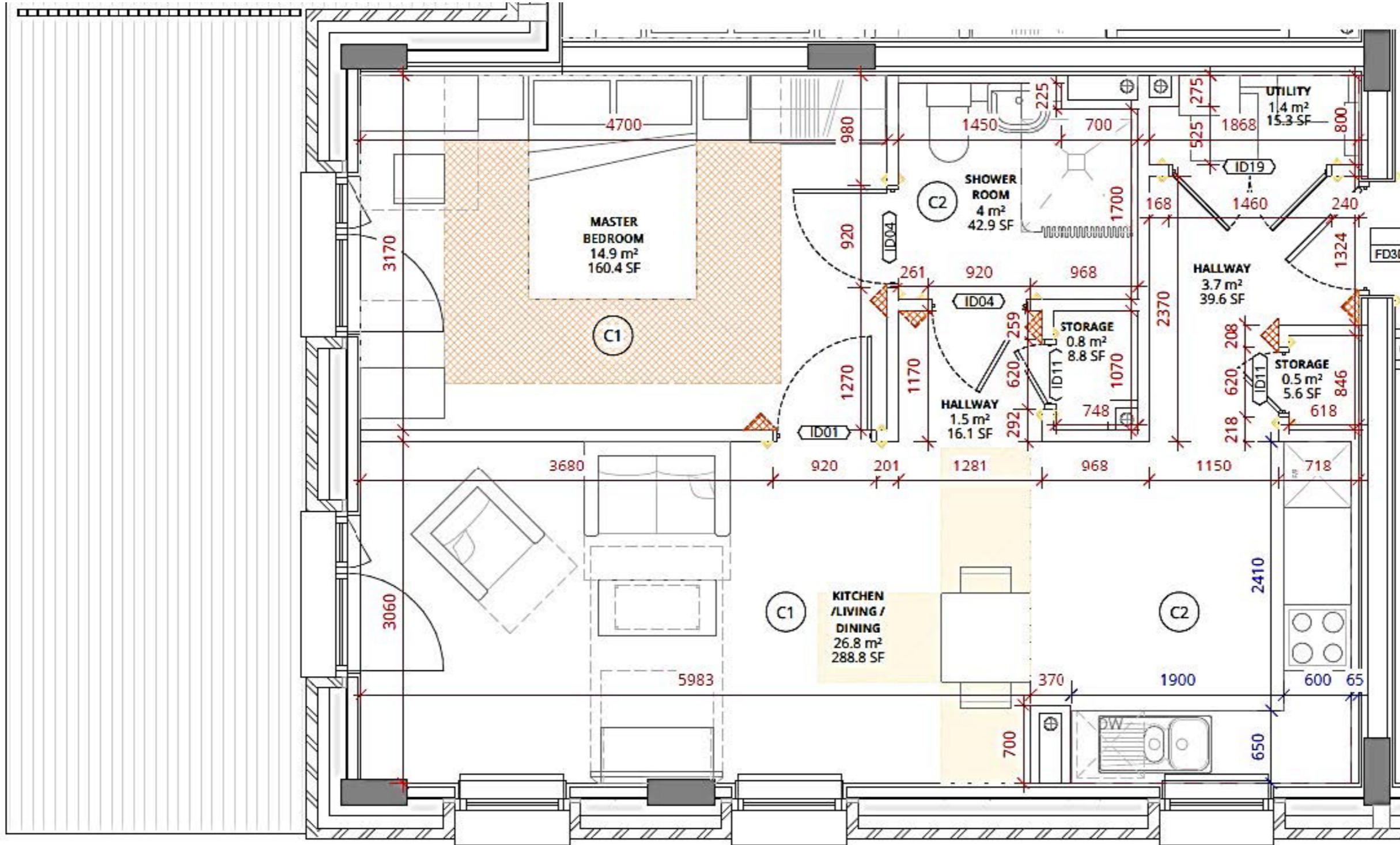


Whilst every attempt has been made to ensure the accuracy of the floorplan contained here, measurements of doors, windows, rooms and any other items are approximate and no responsibility is taken for error, omission, or mis-statement. This plan is for illustrative purposes only and should be used as such by any prospective resident. The services, systems and appliances shown have not been tested and no guarantee as their operability or efficiency can be given.

REF: BLOCK A1 - UNIT A1_1_02

HOLLAND - 1 BED, 2 PERSON

FLAT 3

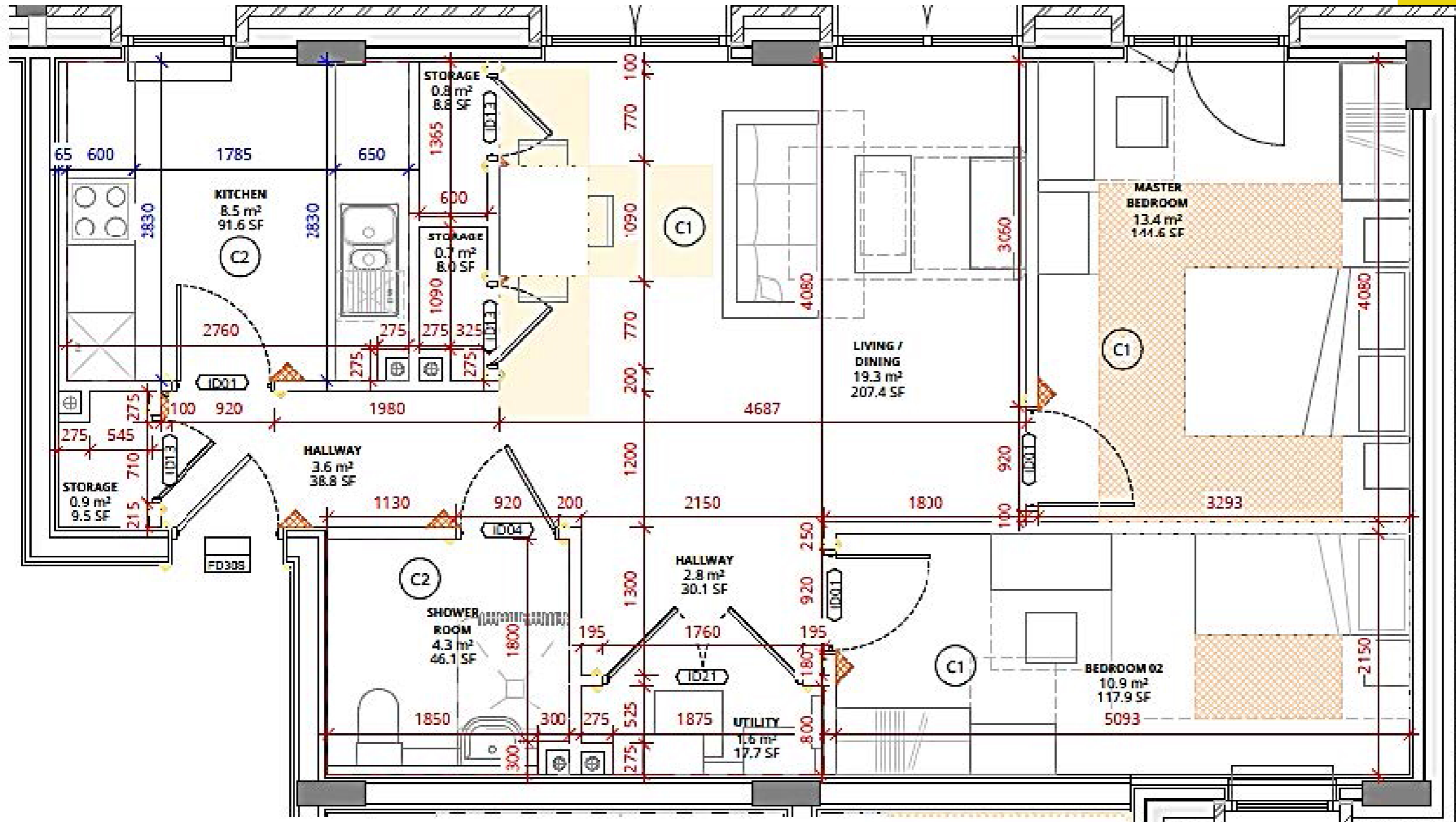


Whilst every attempt has been made to ensure the accuracy of the floorplan contained here, measurements of doors, windows, rooms and any other items are approximate and no responsibility is taken for error, omission, or mis-statement. This plan is for illustrative purposes only and should be used as such by any prospective resident. The services, systems and appliances shown have not been tested and no guarantee as their operability or efficiency can be given.

REF: BLOCK A1 - UNIT A1_1_03

VICTORIA - 2 BED, 3 PERSON

FLAT 7

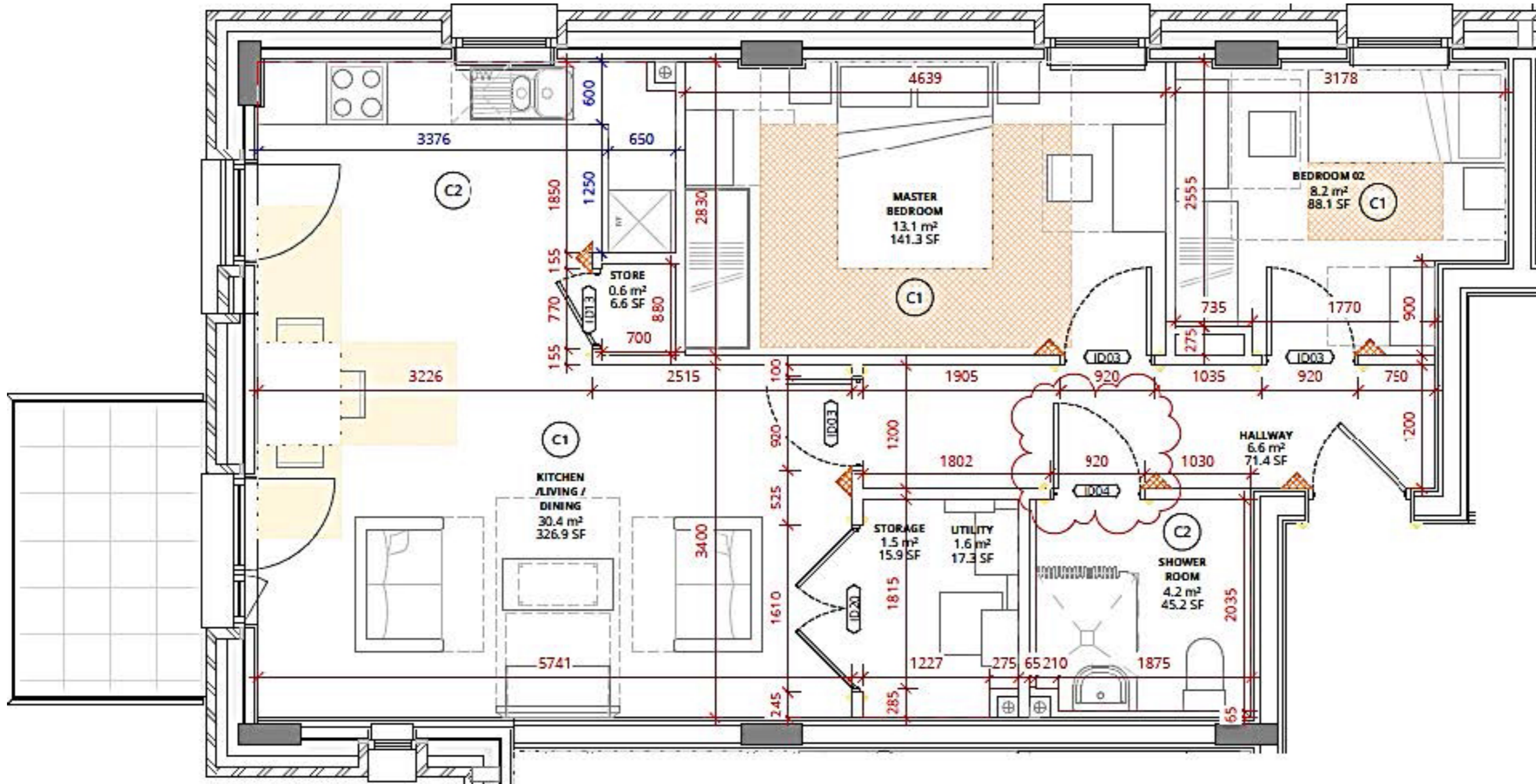


Whilst every attempt has been made to ensure the accuracy of the floorplan contained here, measurements of doors, windows, rooms and any other items are approximate and no responsibility is taken for error, omission, or mis-statement. This plan is for illustrative purposes only and should be used as such by any prospective resident. The services, systems and appliances shown have not been tested and no guarantee as their operability or efficiency can be given.

REF: BLOCK A1 - UNIT A1_2_01

DENHAM - 2 BED, 3 PERSON

FLATS 9, 17

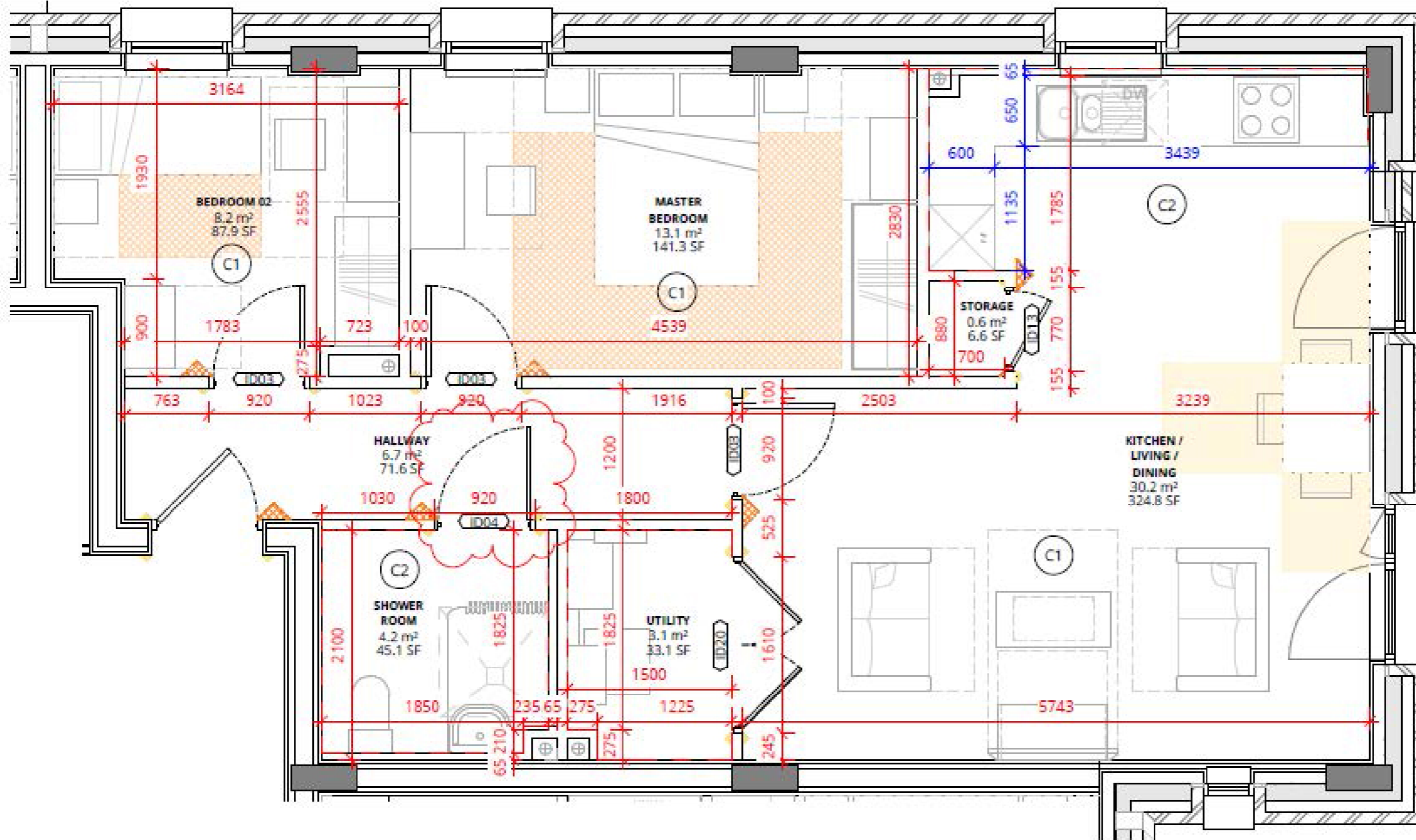


Whilst every attempt has been made to ensure the accuracy of the floorplan contained here, measurements of doors, windows, rooms and any other items are approximate and no responsibility is taken for error, omission, or mis-statement. This plan is for illustrative purposes only and should be used as such by any prospective resident. The services, systems and appliances shown have not been tested and no guarantee as their operability or efficiency can be given.

REF: BLOCK A1 - UNIT A1_2_02

STONELEY - 2 BED, 3 PERSON

FLATS 10, 18

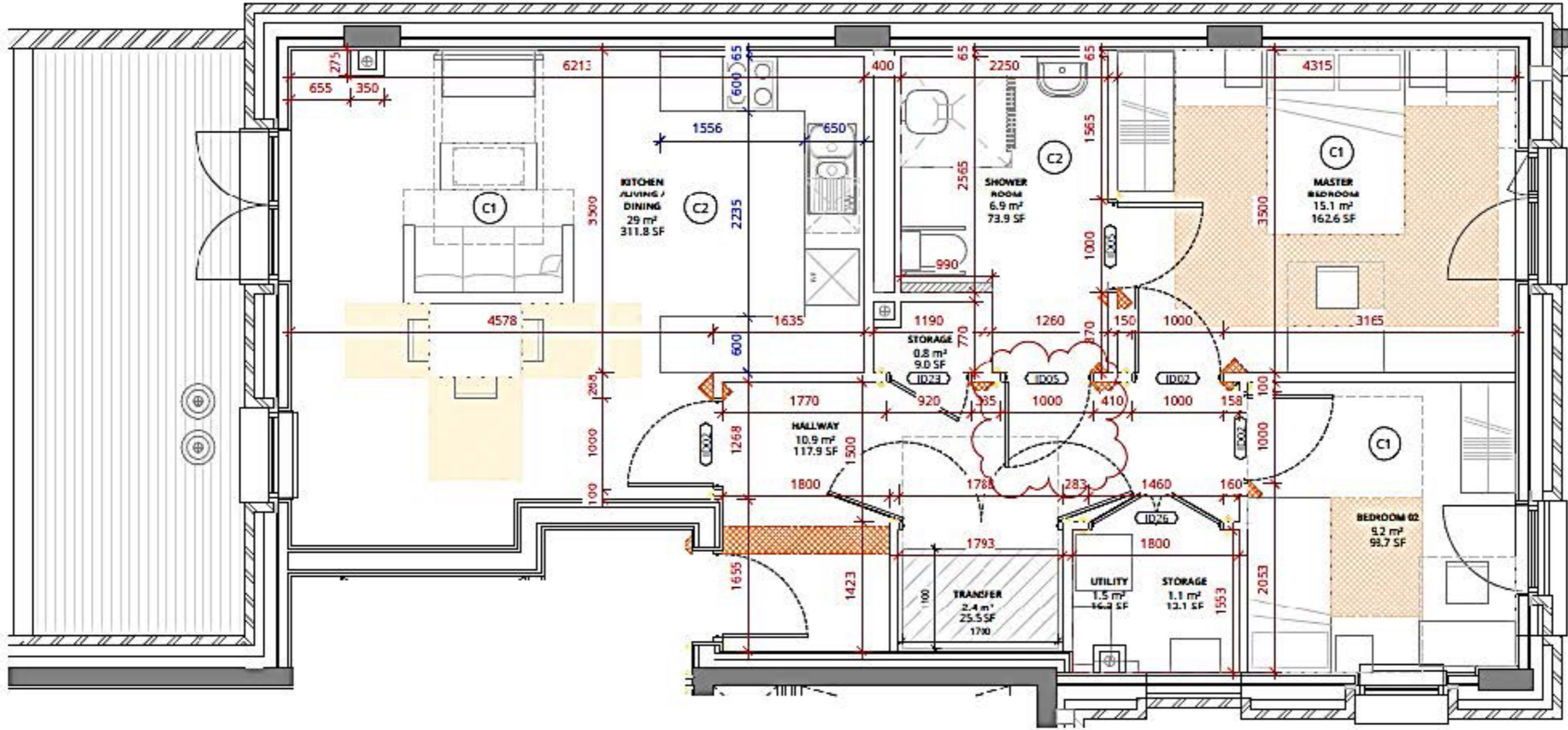


Whilst every attempt has been made to ensure the accuracy of the floorplan contained here, measurements of doors, windows, rooms and any other items are approximate and no responsibility is taken for error, omission, or mis-statement. This plan is for illustrative purposes only and should be used as such by any prospective resident. The services, systems and appliances shown have not been tested and no guarantee as their operability or efficiency can be given.

REF: BLOCK A1 - UNIT A1_2_03

HANSTEAD - 2 BED, 3 PERSON

FLAT 24 (WC)

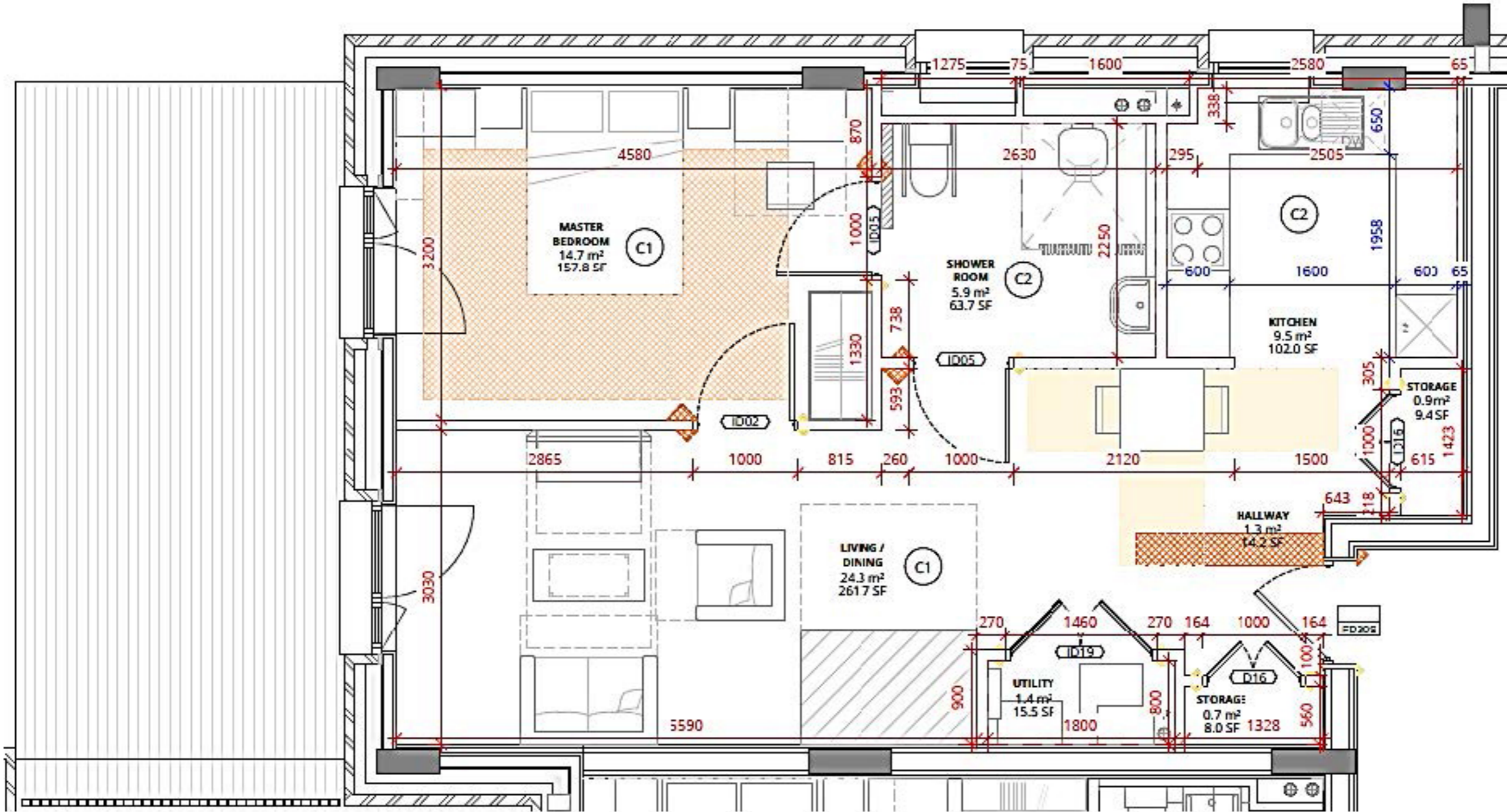


Whilst every attempt has been made to ensure the accuracy of the floorplan contained here, measurements of doors, windows, rooms and any other items are approximate and no responsibility is taken for error, omission, or mis-statement. This plan is for illustrative purposes only and should be used as such by any prospective resident. The services, systems and appliances shown have not been tested and no guarantee as their operability or efficiency can be given.

REF: BLOCK A1 - UNIT A1_2_04

MAGWICK - 1 BED, 2 PERSON

FLAT 28 (WC)

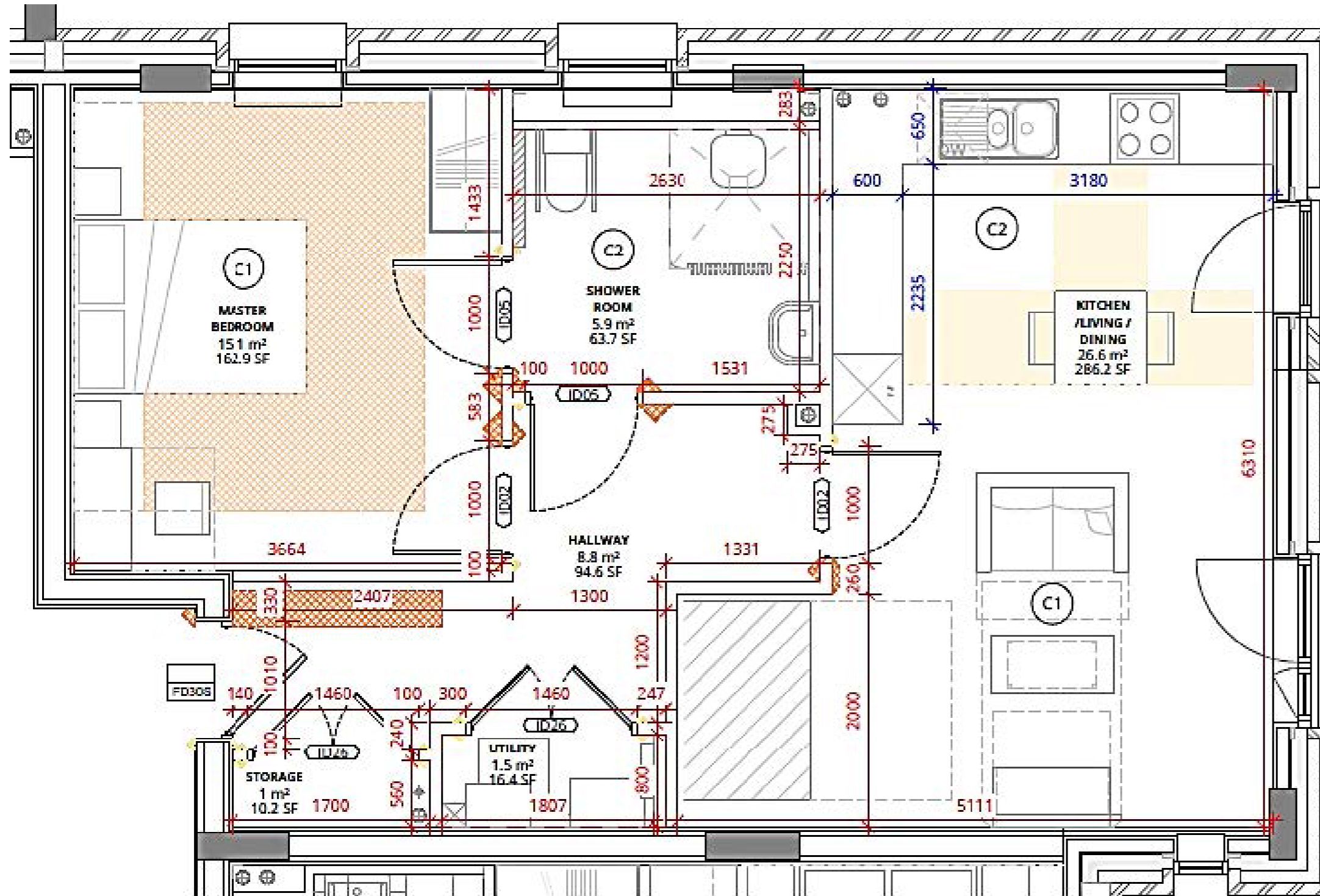


Whilst every attempt has been made to ensure the accuracy of the floorplan contained here, measurements of doors, windows, rooms and any other items are approximate and no responsibility is taken for error, omission, or mis-statement. This plan is for illustrative purposes only and should be used as such by any prospective resident. The services, systems and appliances shown have not been tested and no guarantee as their operability or efficiency can be given.

REF: BLOCK A2 - UNIT A2_1_01

WILLOW - 1 BED, 2 PERSON

FLATS 29 (WC), 34, 39 (WC), 47 (WC),
55 (WC), 63 (WC), 71 (WC)

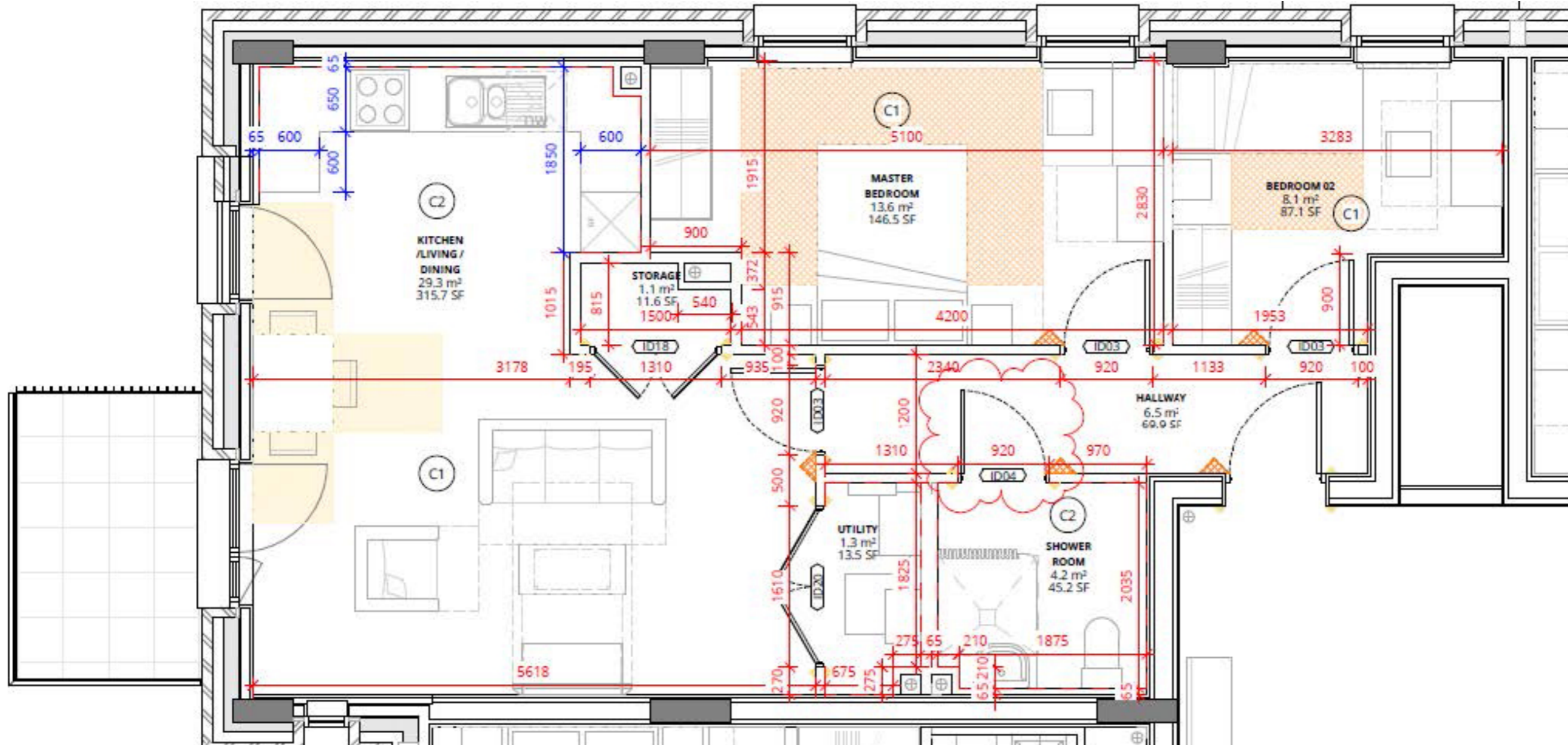


Whilst every attempt has been made to ensure the accuracy of the floorplan contained here, measurements of doors, windows, rooms and any other items are approximate and no responsibility is taken for error, omission, or mis-statement. This plan is for illustrative purposes only and should be used as such by any prospective resident. The services, systems and appliances shown have not been tested and no guarantee as their operability or efficiency can be given.

REF: BLOCK A2 - UNIT A2_1_02

BLETCHLEY - 2 BED, 3 PERSON

FLATS 38, 46, 54, 62, 70



Whilst every attempt has been made to ensure the accuracy of the floorplan contained here, measurements of doors, windows, rooms and any other items are approximate and no responsibility is taken for error, omission, or mis-statement. This plan is for illustrative purposes only and should be used as such by any prospective resident. The services, systems and appliances shown have not been tested and no guarantee as their operability or efficiency can be given.

REF: BLOCK A2 - UNIT A2_2_01

